

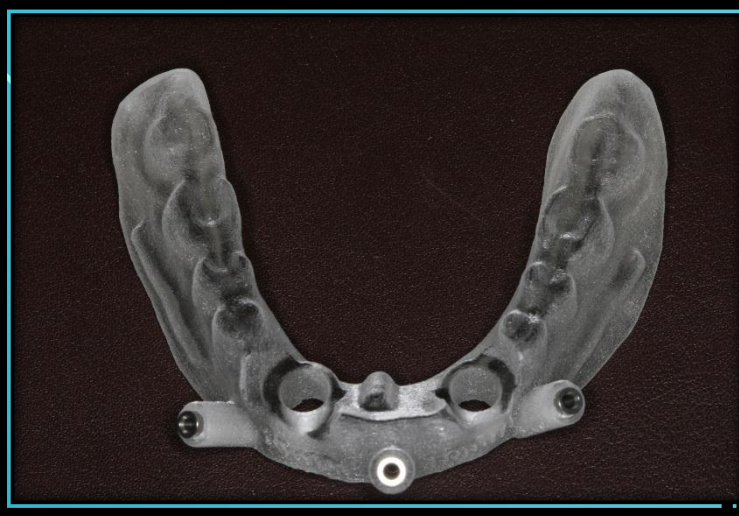
The patients shown in this slide show all had “CT guided” surgery completed. All of the cases were performed without making any incisions and sutures were not needed. The procedures were all completed in less than an hour!



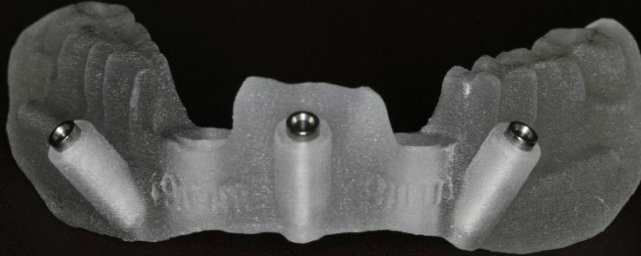
This is a recent case where Dr. Richardson used a CT to fabricate a “guide” for the placement of five implants.





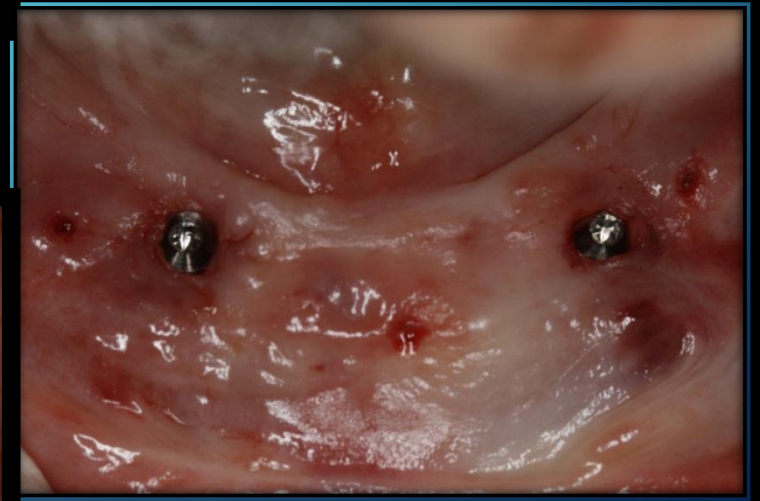


The three slides on top show a "CT created guide". The guide is shown from a top view and the front view. Then you can see how the guide appears when it is placed in the mouth.



This patient came to Dr. Richardson because he could no longer wear his lower denture. After so many years with no teeth you can see in the photo above that his ridge virtually disappeared.

Below is a photo of "guide pins" these are attached to the implants temporarily so that Dr. Richardson can verify that the implants have the correct angle.



In the above photo the "guide pins" have been removed and the implant procedure is completed. The patients denture will now snap onto the implants similar to snaps on a shirt to hold it in place.